

AFHA COVID 19 - RETURN TO HOCKEY FACILITY PLANS & GUIDELINES

Information for Gameplay to
support visiting Associations

Updated Jan 29, 2021



Message from Board:

A safe return to female hockey in Abbotsford in 2020 will require a community effort with buy-in and support from all coaches, volunteers, facilities, players and their families.

This document outlines the guidelines and processes set forth by *Hockey Canada, The Provincial Health Officer of BC, ViaSport, BC Hockey, Pacific Coast Amateur Hockey Association* and our community facility partners.

Hockey in 2020 will look very different than it did in 2019 and it will be our collective responsibility to ensure that we are adhering to the guidelines set forth and ready to adapt to an ever changing environment as we collectively respond to COVID 19.

We look forward to engaging with you in this challenge.

AFHA Board of Directors



ABBOTSFORD ARENAS FOR 2021

▶ Game play in Abbotsford will occur in 3 of our Parks & Recreation Facilities

▶ **ARC – Abbotsford Recreation Center**

- ▶ 2499 McMillan Rd, Abbotsford BC, V2S 7S5
- ▶ (604) 853-4221

▶ **MRC – Matsqui Recreation Center**

- ▶ 3106 Clearbrook Rd, Abbotsford BC, V2T 4B9
- ▶ (604) 855-0500

▶ **M.S.A. Arena**

- ▶ 2323 Emerson St., Abbotsford BC, V2T 3J3
- ▶ (604) 859-3134

AFHA Facility Guidelines for Games

MASKS ARE MANDATORY FOR TEAM OFFICIALS WHEN THEY CANNOT OBSERVE SAFE PHYSICAL DISTANCING

VISITING TEAMS REQUIRED TO COMPLETE HEALTH CHECK / ATTENDANCE FOR THEIR PLAYERS AND PERSONNEL

Facility	Arrival	Entrance	Departure	Exit	Spectators	Capacity	Dressing Rooms	Washrooms	Isolation Rm
ARC - Abbotsford Rec Center 2499 McMillan Rd	Line up outside using dots - enter doors open 15 minutes prior	South side by parking lot - must enter via staircase on right side of concourse	Must exit within 15 minutes of ice time ending	Via Ramp down concourse (same doorwar as entrance on South side of arena)	NONE - Team volunteers and players only	50 Total 1 timekeeper 1 scorekeeper 2-3 refs Max 23 per team consisting of (Players, up to 3 coaches + HCSP on bench, Manager, Locker Moms, COVID Officer, Videographer)	For skates and goalie pads only - all other gear should be worn to arena. Max capacity 8 skaters (unless otherwise posted) + 2 locker moms.	Public Washrooms in lobby west side of rink	Next to Referree Room under stands
MRC - Matsqui Rec Center - 3106 Clearbrook Rd	Line up outside using dots - enter doors open 15 minutes prior	Enter via Main arena doors	Must exit within 15 minutes of ice time ending	Exit via emergency exit (follow signs)	NONE - Team volunteers and players only	50 Total 1 timekeeper 1 scorekeeper 2-3 refs Max 23 per team consisting of (Players, up to 3 coaches + HCSP on bench, Manager, Locker Moms, COVID Officer, Videographer)	For skates and goalie pads only - all other gear should be worn to arena. Max capacity 8 skaters (unless otherwise posted) + 2 locker moms.	Public Washrooms in main lobby	Room just past doors to pool in main lobby
M.S.A. Arena - 2323 Emerson Street	Line up outside using dots - enter doors open 15 minutes prior	Enter via North Lobby Doors	Must exit within 15 minutes of ice time ending	Exit via South Lobby Doors	NONE - Team volunteers and players only	50 Total 1 timekeeper 1 scorekeeper 2-3 refs Max 23 per team consisting of (Players, up to 3 coaches + HCSP on bench, Manager, Locker Moms, COVID Officer, Videographer)	For skates and goalie pads only - all other gear should be worn to arena. Max capacity 8 skaters (unless otherwise posted) + 2 locker moms.	Public Washrooms in main lobby	Room at East end of Dressing Room Corridor

ABBOTSFORD ARENAS FOR 2021

Please note the following rules apply to all of our facilities:

VISITING TEAMS REQUIRED TO COMPLETE HEALTH CHECKS / ATTENDANCE TRACKING FOR THEIR PERSONNEL

- ▶ Access to arena only 15 minutes prior to ice time after attendance and screening completed by COVID Officer. Must vacate premises by 15 minutes post ice-time.
- ▶ 8 Player Max capacity / dressing + Designated Monitors
- ▶ 50 people max in the arena at all times including players / officials / volunteers. Each team has max capacity of 23 Personnel
 - ▶ This means **NO SPECTATORS** for games in 2021
- ▶ No access to washrooms / shower in dressing rooms

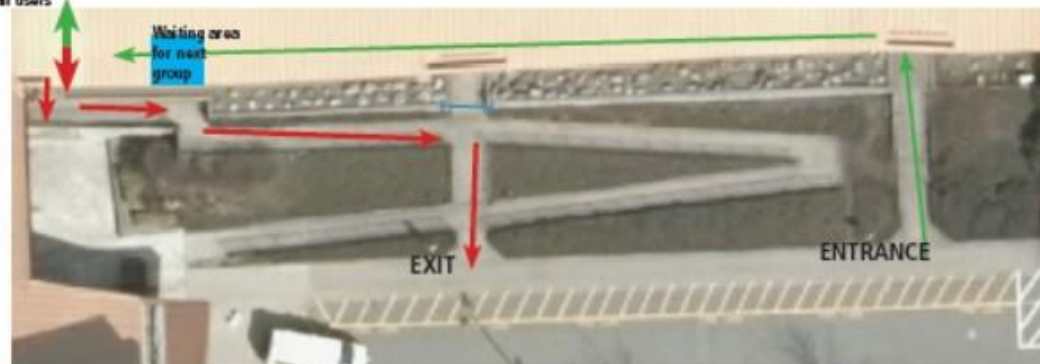
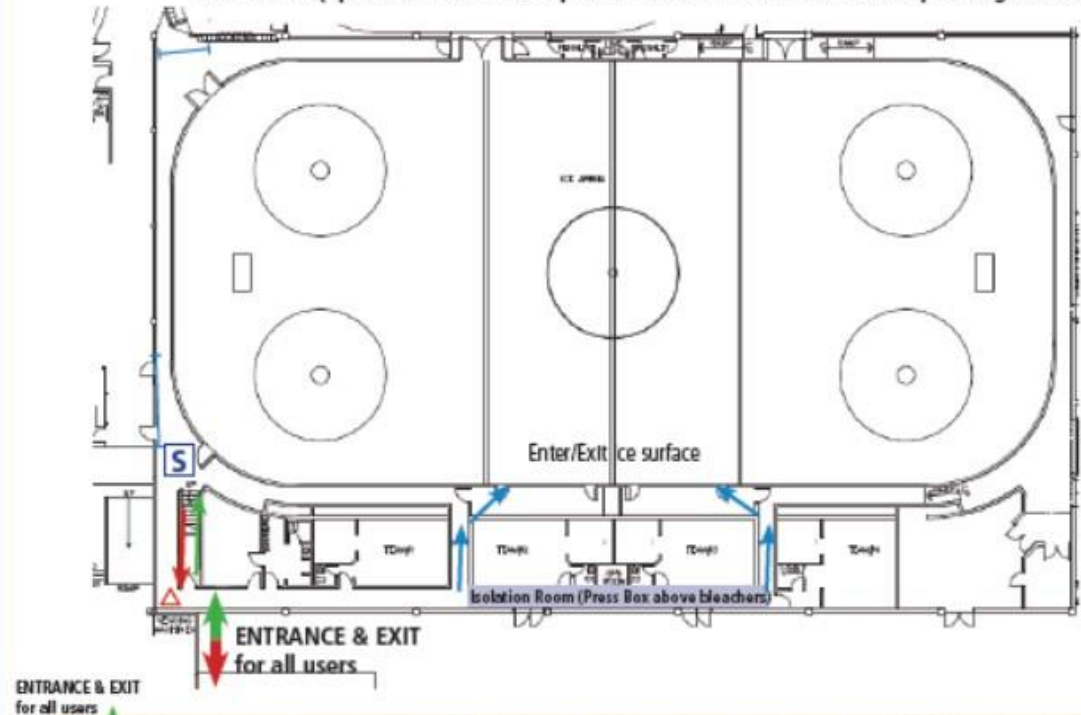
ARC

- ▶ No spectators allowed for games, players and team officials only.
- ▶ Each team COVID Officers to complete health checks and attendance external to entrance.
- ▶ Access to arena at 15 minutes prior to ice time. Players fully dressed with exception of skates.
- ▶ All teams will enter and exit at the top of the stairs and enter at bleacher level. They will then proceed down the stairs to the dressing rooms
- ▶ Teams will be assigned 2 dressing rooms with posted capacity for skate tying.
- ▶ Please note that the designated Isolation Room is in the upstairs Press Box (above the bleachers)

ABBOTSFORD RECREATION CENTRE ARENA FACILITY RE-OPENING

Public Entrance	→	Sanitizing Station	S	Isolation Room	■
Public Exit	→	Safety Signage	△		
Ice surface entrance/exit	→	Stanchions	⇄	Waiting Area	■

ARC Arena (option 1: enter/exit top of bleachers. Teams don't overlap during bookings.)

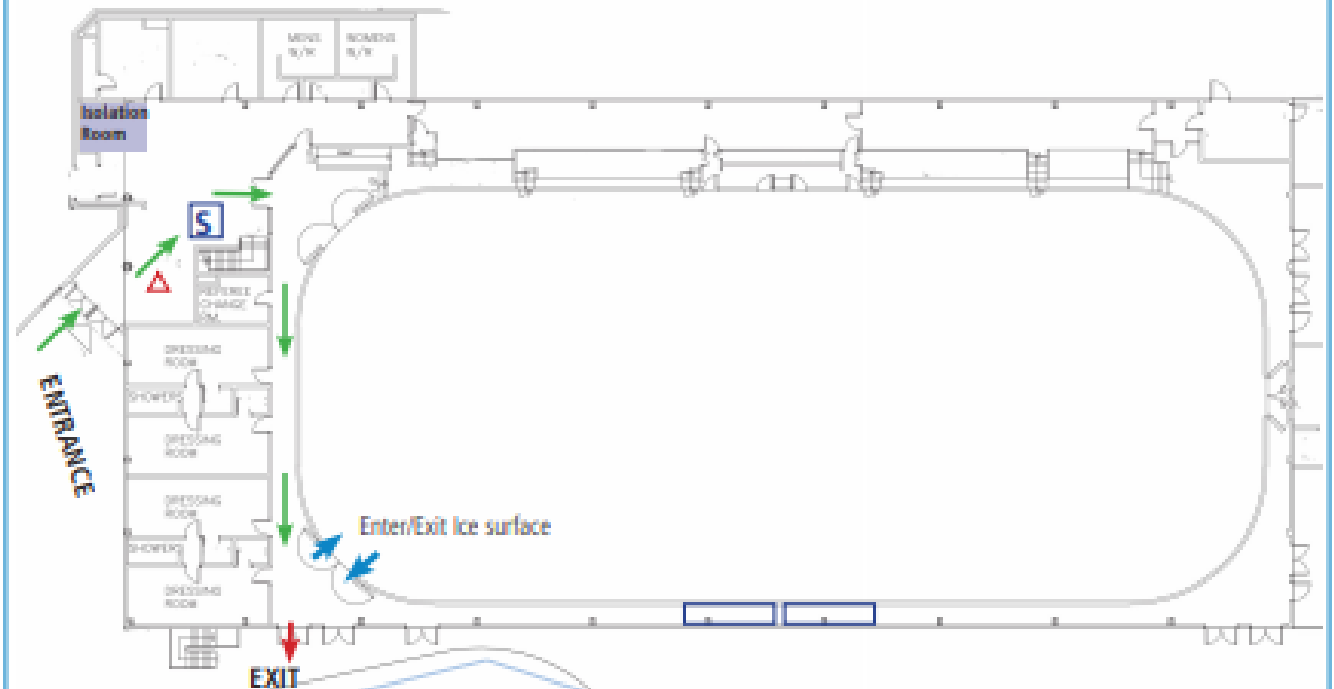


MRC

- ▶ No spectators allowed for games, players and team officials only.
- ▶ Each team COVID Officers to complete health checks and attendance external to entrance.
- ▶ Access to arena at 15 minutes prior to ice time. Players fully dressed with exception of skates.
- ▶ Enter only via lobby – Exit only via emergency exit doors
- ▶ Teams will be assigned 2 dressing rooms with posted capacity for skate tying.
- ▶ Please note that the designated Isolation Room is just past doors to pool area

MATSQUI RECREATION CENTRE ARENA FACILITY RE-OPENING

Public Entrance	→	Sanitizing Station	S
Public Exit	→	Safety Signage	△
Ice surface entrance/exit	→		



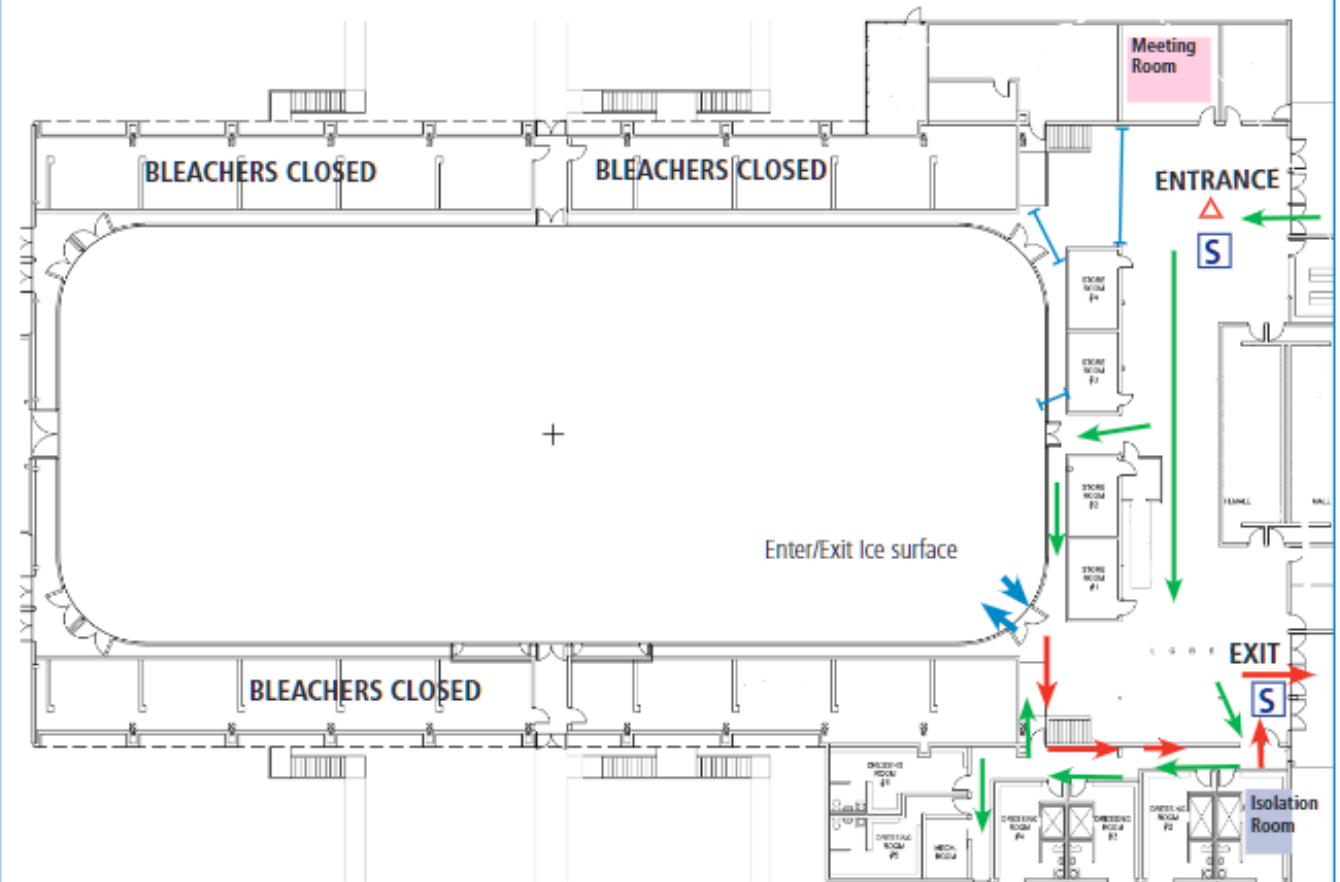
**EMERGENCY LANE -
NO PARKING OR WAITING ZONE**

M.S.A. ARENA

- ▶ No spectators allowed for games, players and team officials only.
- ▶ Each team COVID Officers to complete health checks and attendance external to entrance.
- ▶ Access to arena at 15 minutes prior to ice time. Players fully dressed with exception of skates.
- ▶ Enter via doors at North end of parking lot and exit via doors at South end of Parking lot. Follow arrows in facility.
- ▶ Teams will be assigned 2 dressing rooms with posted capacity for skate tying.
- ▶ Please note that the designated Isolation Room is at East end of Dressing Room hallway

MSA ARENA FACILITY RE-OPENING

Public Entrance	→	Sanitizing Station	S
Public Exit	→	Safety Signage	△
Ice surface entrance/exit	→	Stanchions	⇄



COMMUNICATIONS OFFICER

If any further information required please have your team COVID OFFICER contact AFHA Communications Officer

Adam Fletcher - risk@abbotsfordfemalehockey.com

(778) 899-2364

